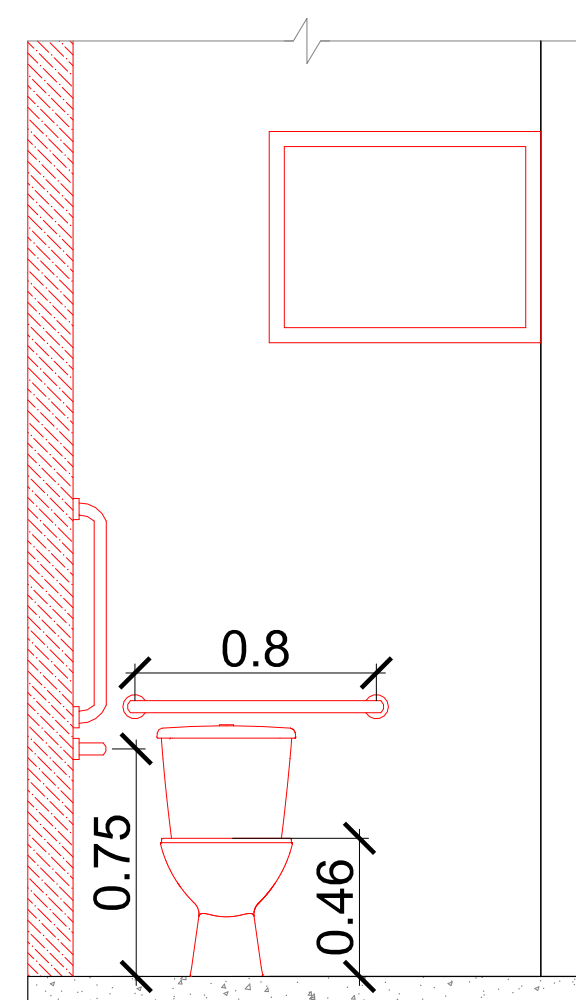
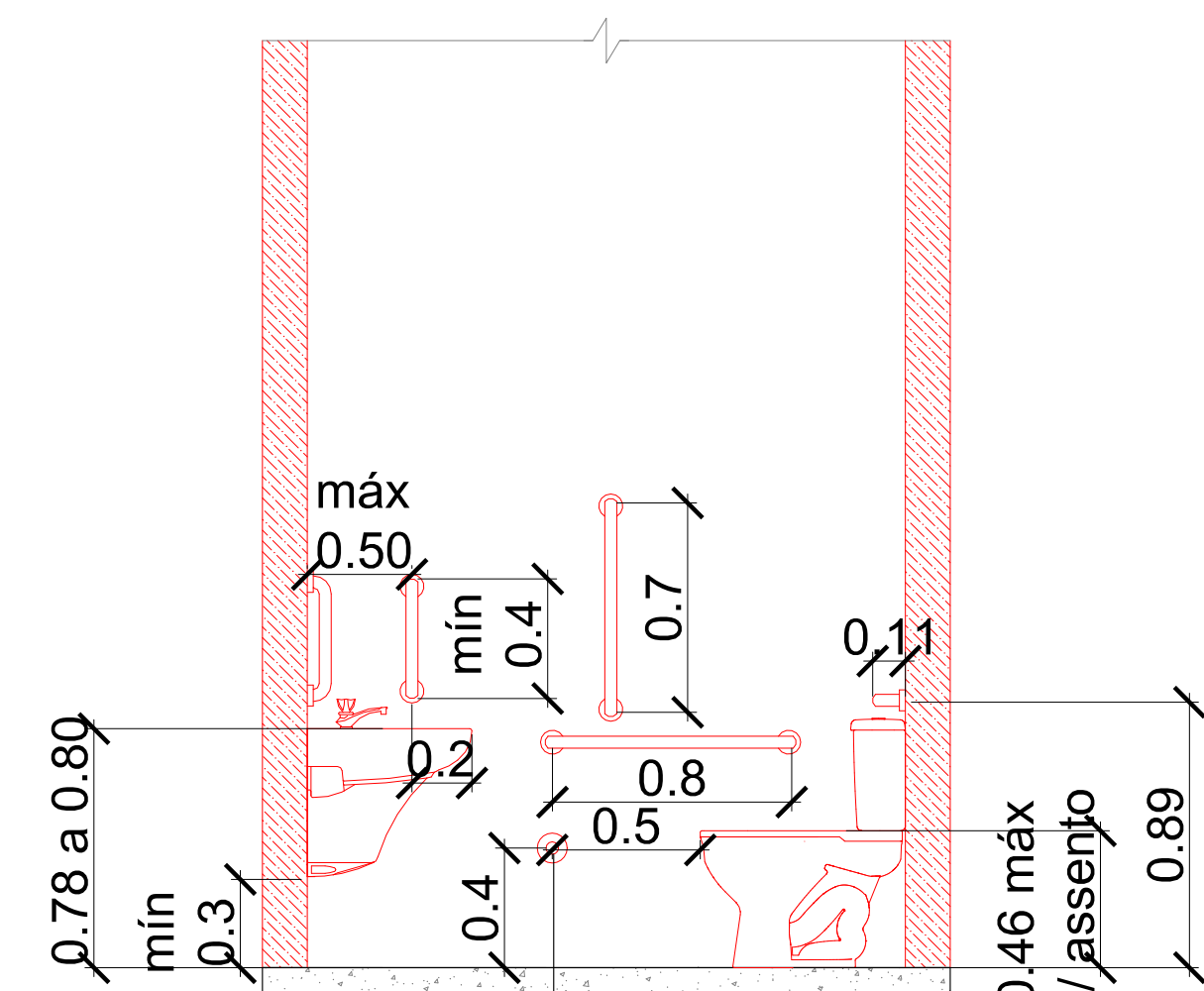


Technical drawing of the WC PCD toilet unit. The drawing shows the unit with dimensions: 1.55m for the width and 90x210 (livre) for the height. The unit is labeled 'WC PCD' and 'A: 3,10m² P: Cerámico'. Two views are indicated: 'VISTA A' and 'VISTA B'. The drawing also shows a side view of the unit with a height dimension of 2. The unit is shown in a cross-section view, indicating its installation in a wall.

PLANTA BAIXA
ESC:1/25



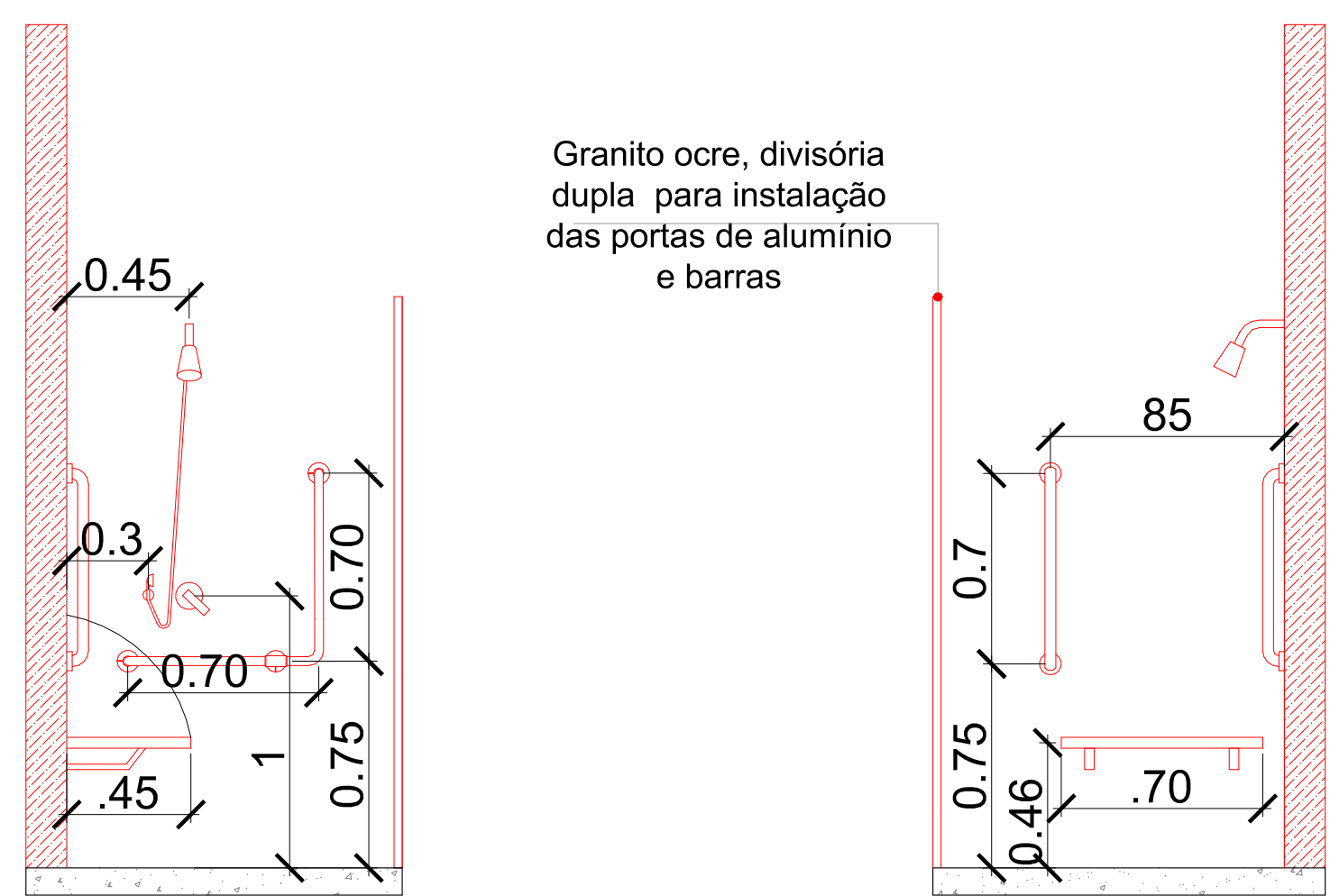
VISTA AA
ESC:1/25



VISTA BB
ESC:1/25

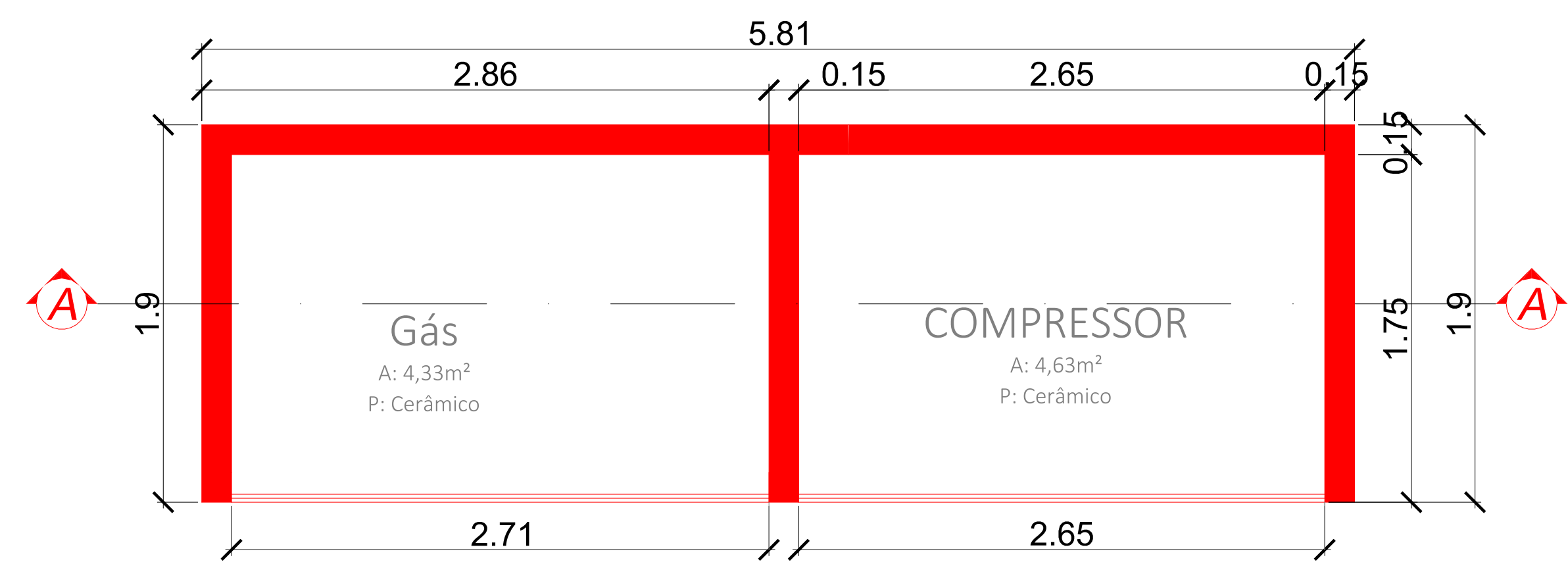
5 Ponto de alarme com
sinal sonoro do lado externo,
fixado á 40cm do chão

PLANTA BAIXA
ESC:1/25

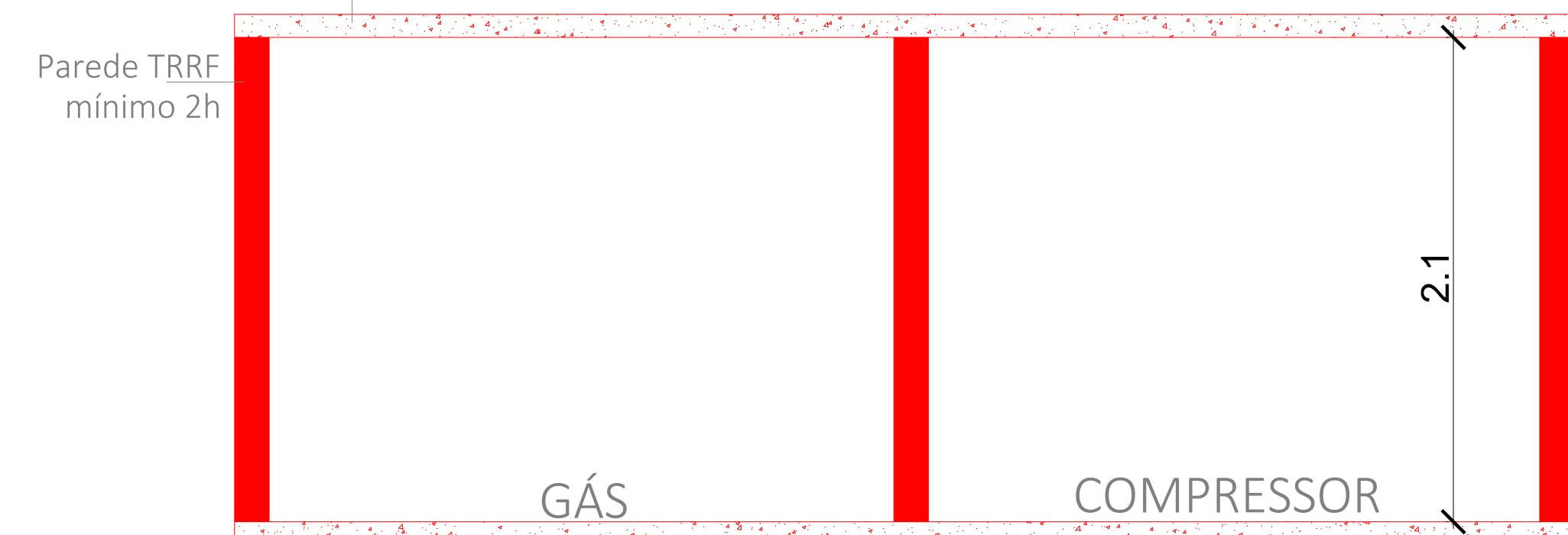


VISTA AA
ESC:1/25

VISTA BB
ESC:1/25

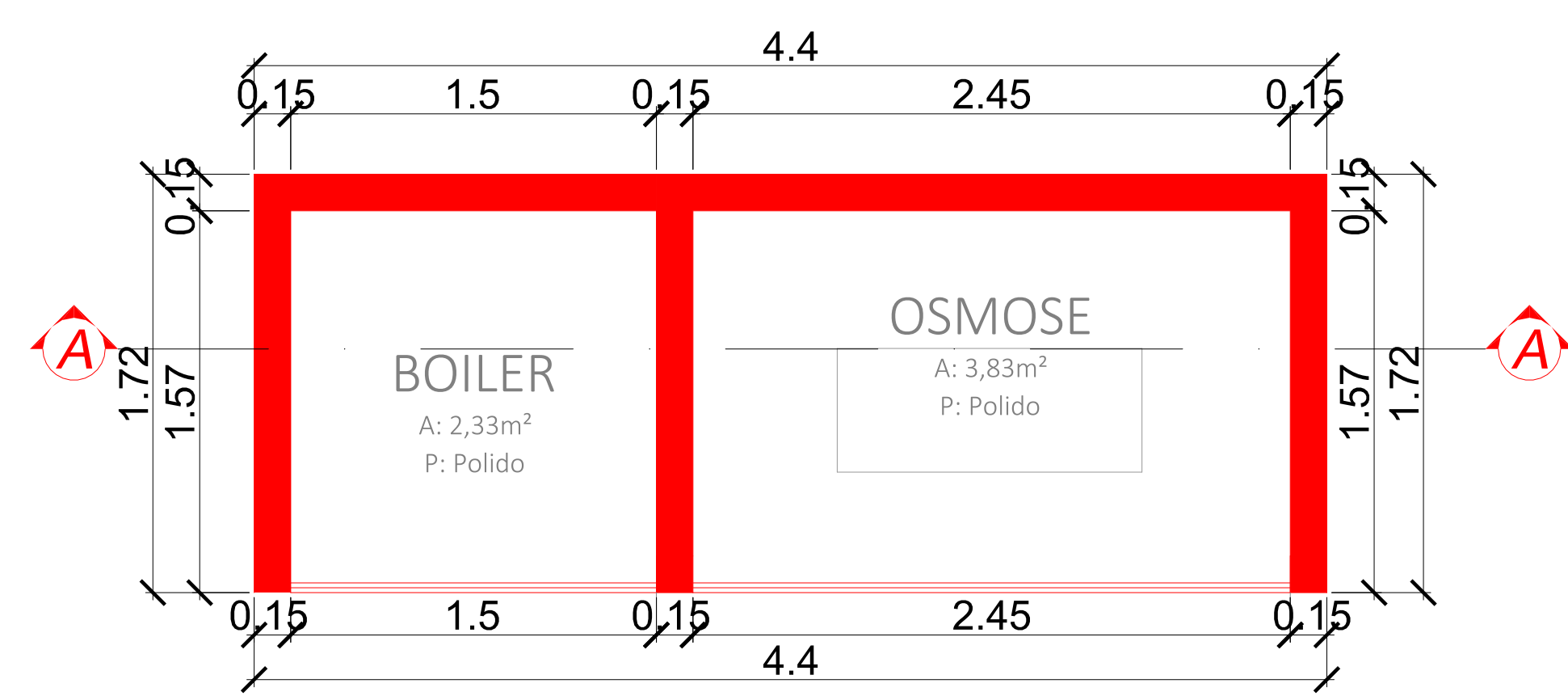


PLANTA BAIXA
ESC:1/25

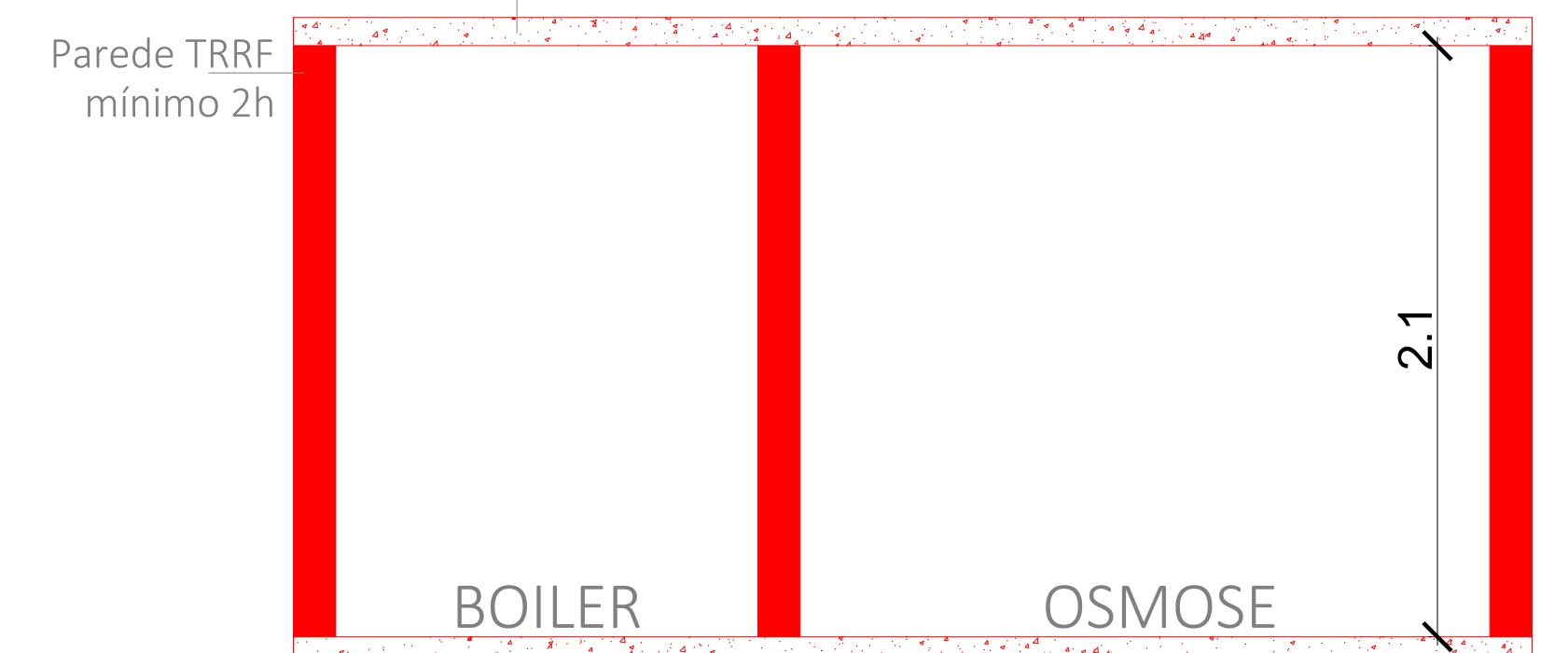


CORTE A
ESC:1/25

VISTA FRONTAL
ESC:1/25



PLANTA BAIXA
ESC:1/25

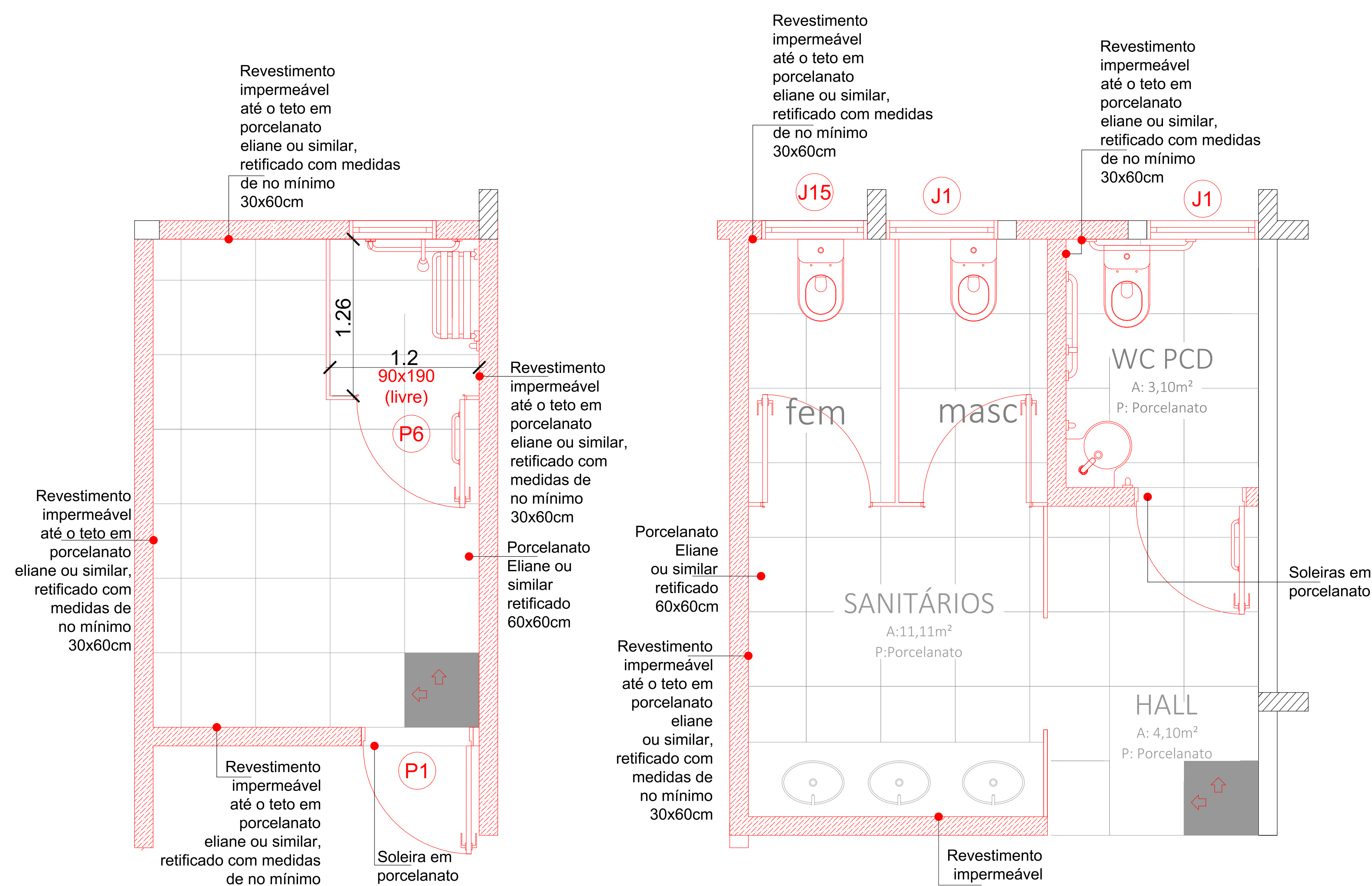


CORTE AA
ESC:1/25

VISTA FRONTAL
ESC:1/25

[illegible]

PLANTA BAIXA
ESC:1/25



PLANTA BAIXA - PAGINAÇÃO
DE PISO
ESC: 1/25

PLANTA BAIXA - PAGINAÇÃO
DE PISO
ESC: 1/25